

## The Look: Professional, Credible

### Men

- Matching suit (pants and jacket) in a neutral colour.
- Collared dress shirt and tie. This is where you can add a pop of colour.
- Coordinating belt and dress shoes.

### Women

- Pantsuit, knee length skirted suit or conservatively tailored dress in a neutral colour.
- Blouse or collared shirt that provides visual interest. Not too tight or revealing.
- Simple, professional dress shoes.





## The Look: Put Together, Friendly

### Men

- Dress Pants. No Jeans. Belt.
- Collared shirt, polo shirt or sweater.
- Tie and jacket optional.
- Simple casual shoes. No runners.

### Women

- Dress pants or knee length skirt/ dress. No jeans.
- Blouse, dress shirt or sweater. Not too tight or revealing.
- Simple casual shoes.

# Top 13 Mistakes to Avoid at Networking Events

SFU

BEEDIE SCHOOL OF BUSINESS  
CAREER MANAGEMENT CENTRE



**1** Distracting jewelry

Chipped or dirty nails

**2**



**3** Short skirt

Run in tights/hosiery

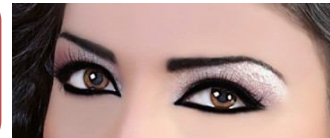
**4**



**5** Party, prom or clubbing dress

Too much makeup

**6**



**7** Strong perfume/cologne

Bad breath

**8**



**9** Wrinkled shirt

Sneakers with dress pants

**10**



**11** White socks with dress shoes

Rips and tears in pants

**12**



**13** Athletic wear

# Top 10 Ideas to Stand Out & Be Prepared at Networking Events



BEEDIE SCHOOL OF BUSINESS  
CAREER MANAGEMENT CENTRE



1

Pocket square

Tie clip

2



3

Business card holder

Portfolio case

4



5

Blotting sheets– for oily skin



Carry spare tights in case of runs

6



7

Add a pop of colour with your dress shirt, tie, or a scarf.



SFU Beedie name badge

8



9

SFU Beedie business cards



Bring a lint roller

10

